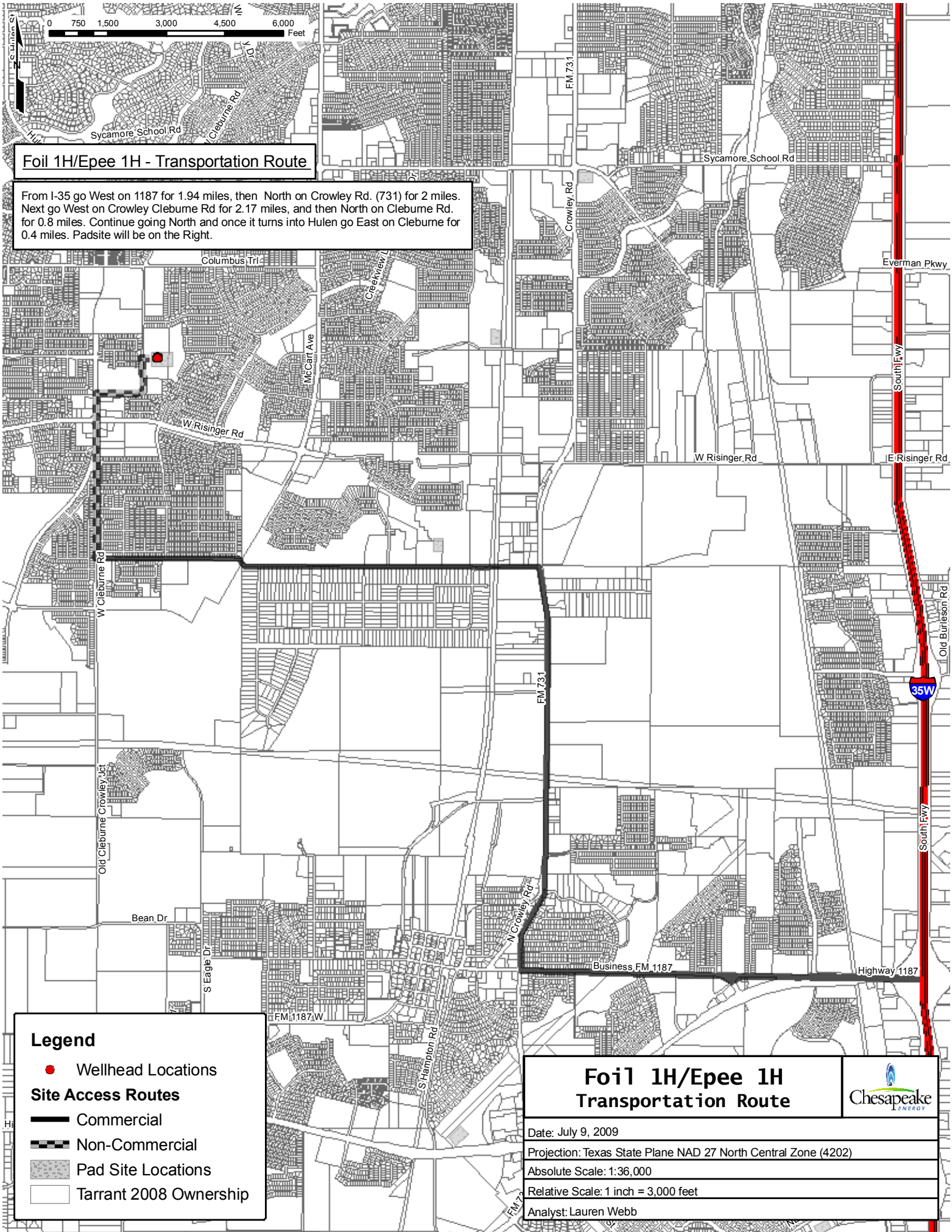


Foil 1H/Epee 1H - Transportation Route

From I-35 go West on 1187 for 1.94 miles, then North on Crowley Rd. (731) for 2 miles. Next go West on Crowley Cleburne Rd for 2.17 miles, and then North on Cleburne Rd. for 0.8 miles. Continue going North and once it turns into Hulen go East on Cleburne for 0.4 miles. Pad site will be on the Right.



Legend

- Wellhead Locations
- Site Access Routes**
- Commercial
- Non-Commercial
- ▨ Pad Site Locations
- Tarrant 2008 Ownership

**Foil 1H/Epee 1H
Transportation Route**



Date: July 9, 2009
 Projection: Texas State Plane NAD 27 North Central Zone (4202)
 Absolute Scale: 1:36,000
 Relative Scale: 1 inch = 3,000 feet
 Analyst: Lauren Webb