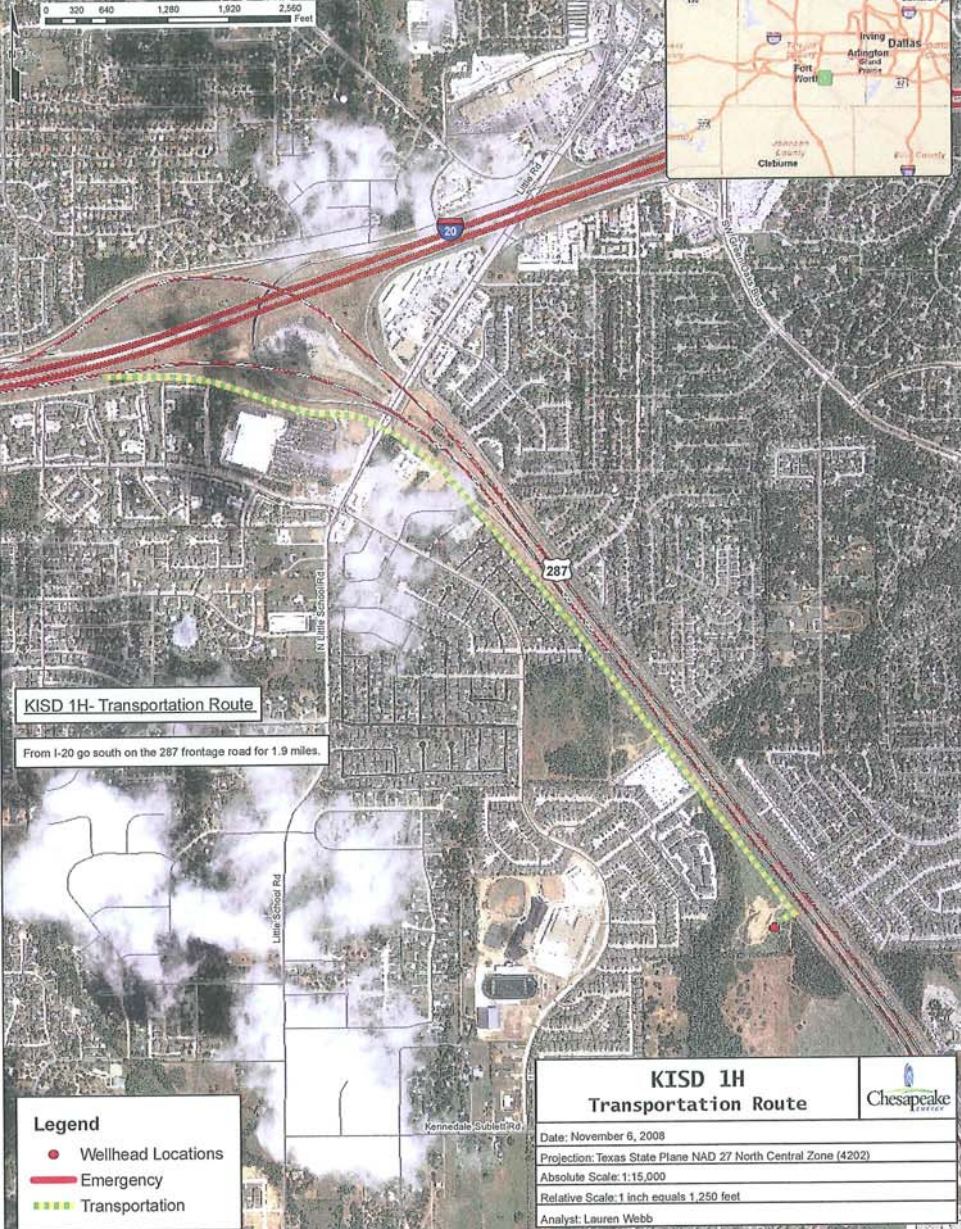


0 320 640 1,280 1,920 2,560 Feet



**KISD 1H- Transportation Route**

From I-20 go south on the 287 frontage road for 1.9 miles.

**Legend**

- Wellhead Locations
- Emergency
- - - - Transportation

<b>KISD 1H Transportation Route</b>		
Date: November 6, 2008		
Projection: Texas State Plane NAD 27 North Central Zone (4202)		
Absolute Scale: 1:15,000		
Relative Scale: 1 inch equals 1,250 feet		
Analyst: Lauren Webb		