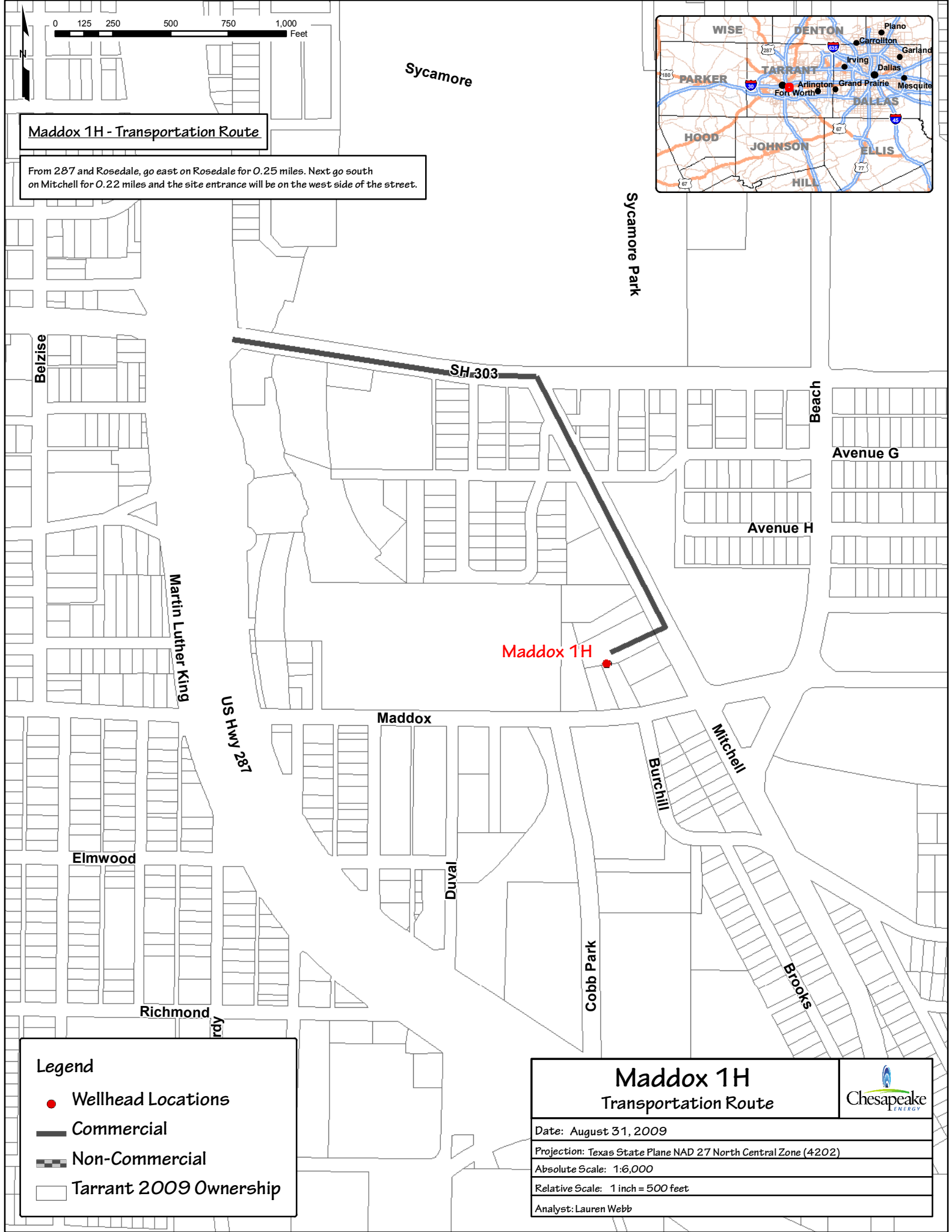
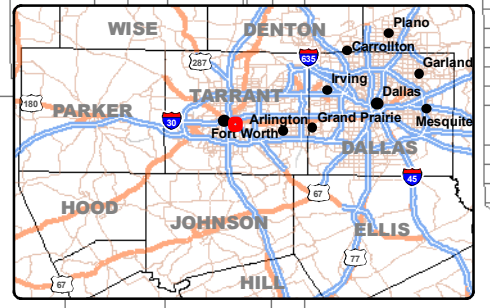


Maddox 1H - Transportation Route

From 287 and Rosedale, go east on Rosedale for 0.25 miles. Next go south on Mitchell for 0.22 miles and the site entrance will be on the west side of the street.



Legend

- Wellhead Locations
- Commercial
- Non-Commercial
- Tarrant 2009 Ownership

<h2 style="margin: 0;">Maddox 1H</h2> <h3 style="margin: 0;">Transportation Route</h3>	
Date: August 31, 2009	
Projection: Texas State Plane NAD 27 North Central Zone (4202)	
Absolute Scale: 1:6,000	
Relative Scale: 1 inch = 500 feet	
Analyst: Lauren Webb	