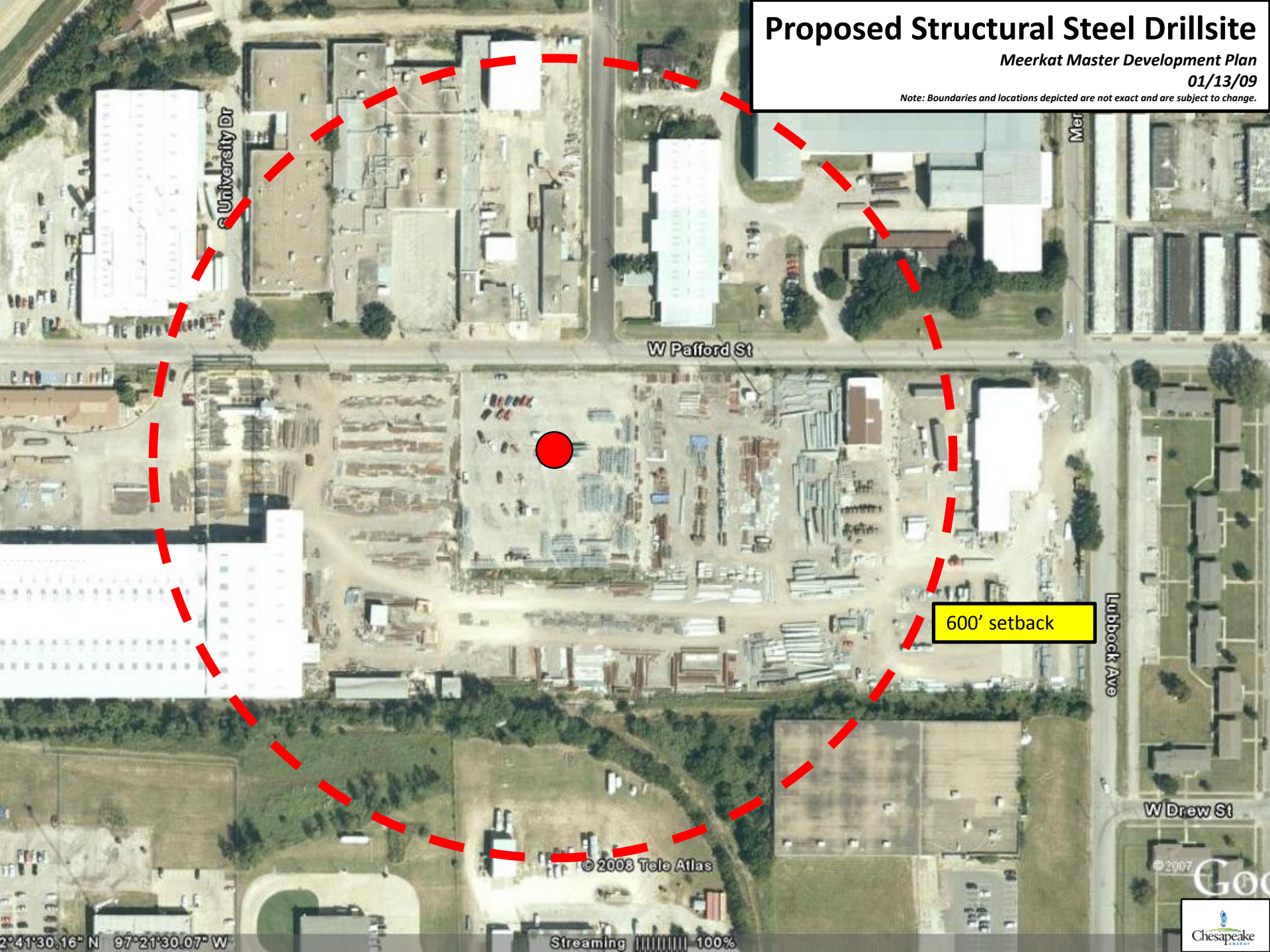


Proposed Structural Steel Drillsite

Meerkat Master Development Plan

01/13/09

Note: Boundaries and locations depicted are not exact and are subject to change.



University Dr

Mer

W Pafford St

600' setback

Lubbock Ave

W Drew St

© 2008 Tele Atlas

© 2007



2°41'30.16" N 97°21'30.07" W

Streaming 100%